

V. DE NOBLE

28 JUN 82

AA Reinforcement -

AA
1.28 mg/kg/infusion

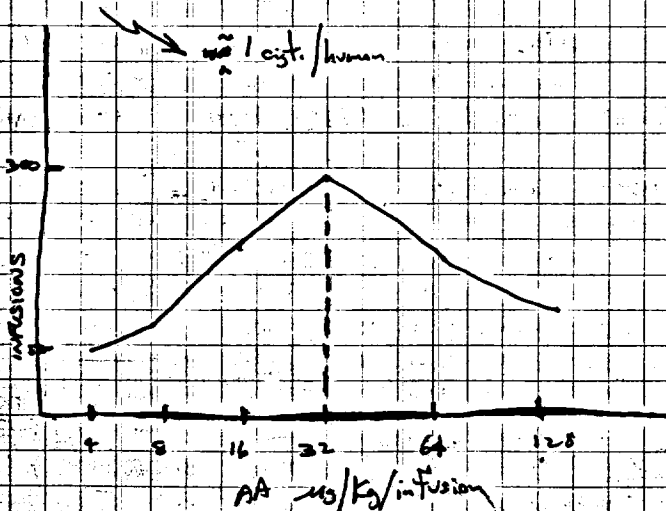
2 hr.
21 response ±
vs 9± saline

18

Nicotine & AA convey in a cigt.

32 mg/kg/infusion 24 hr session

AA functions as a
positive reinforcer
in rats



Need a good, solid
negative control
(a compound in smoke)

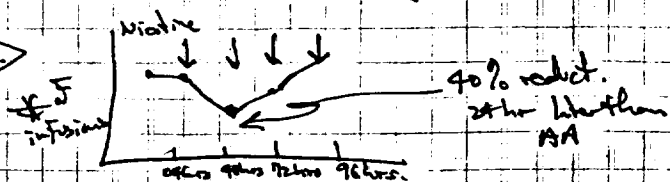
Now doing
α-MeTyr work

Naloxone pretreatment had no effect
∴ AA effect is not being mediated through endogenous
system (TIQ)

Haloperidol - nonspecific, postsynaptic
dopaminergic antagonist

→ reduced AA let 24hrs some recovery next 24hrs
Full recovery next 24hrs.

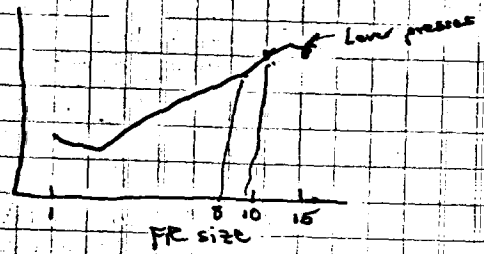
Nicotine/haloperidol ⇒



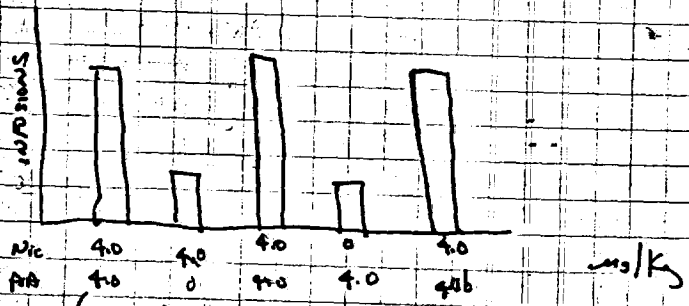
1002973620

2

Nicotine is not as powerful a reinforcer as AA



Nic-AA extinction Data



neither of these doses maintains behavior in rats.

Need to know maximal reinforcing ratio of nic/AA.

Frustrative nonreward

longer history for reinforcement

FR - DRL

Nicotine IV guys will not self administer.